

Office of Geographic Information

Created by HB 2457 in 2004

O.S. Title 82: 1501-205.3

Mike Sharp, State Geographic Information Coordinator
Shellie Willoughby, Assistant State Geographic Information Coordinator

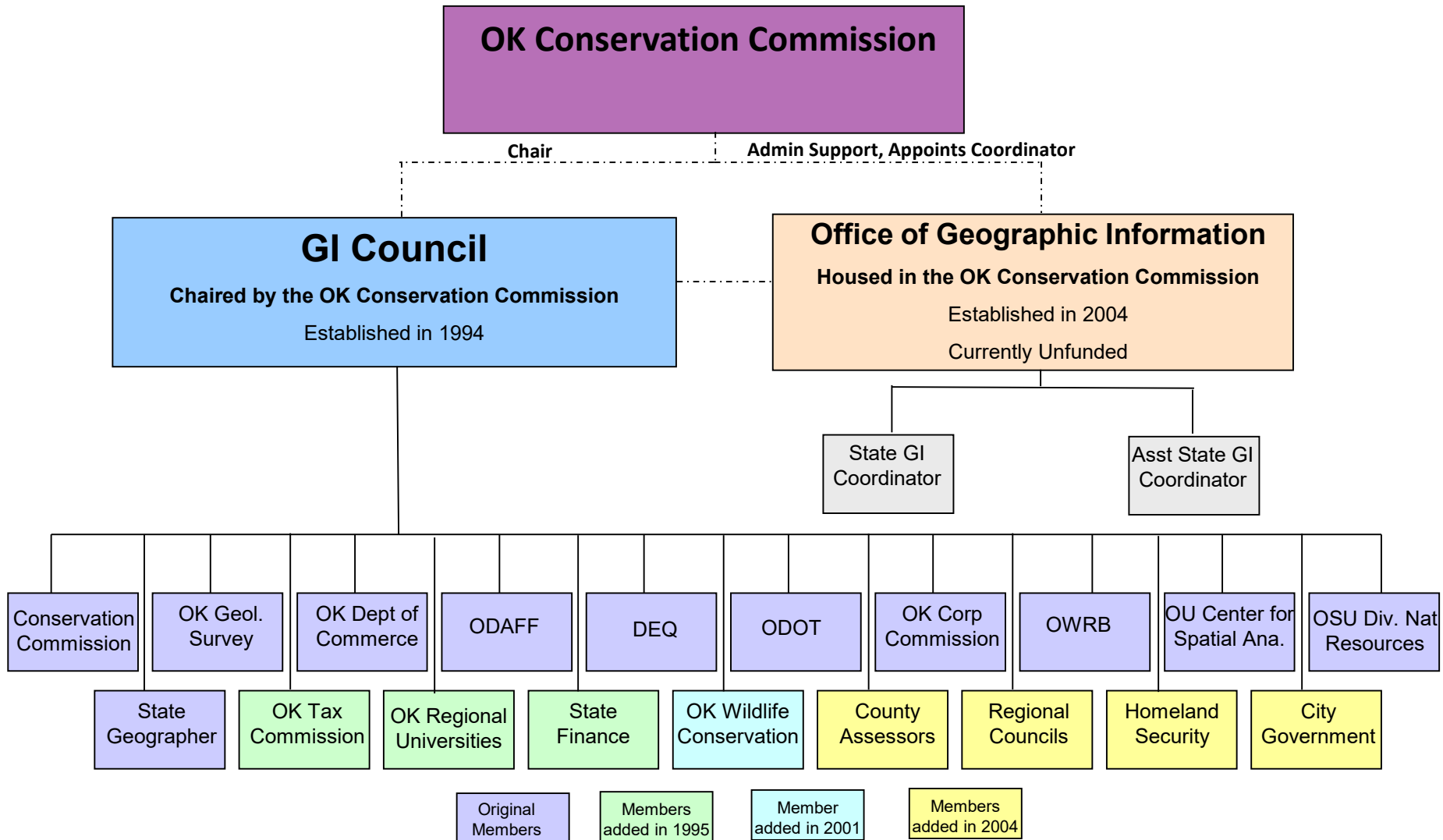
Office of Geographic Information

- Established within the Oklahoma Conservation Commission
- State Geographic Information Coordinator shall manage the Office
- OCC Executive Director, after consultation with the State Geographic Information Council, shall appoint the SGIC
- Annual budget to be submitted with OCC
- Deposit funds in Geographic Information Revolving Fund- O.S.82:1501-205.2

Duties and Responsibilities, The Office shall:

- Provide staff & technical support to the SGIC.

Structure of the State GI Council



Duties and Responsibilities, The Office shall: (con't)

- Establish a statewide clearinghouse for geographic data.
- Coordinate state GIS grant programs for local governments.
- Coordinate multiagency GIS projects, including development & maintenance of data and GI systems.
- Provide consulting, technical, education and training assistance to local and state agencies
- Develop, maintain, update & interpret GIS standards under direction of the SGIC.

Duties and Responsibilities, The Office shall: (con't)

- Provide GIS services, as requested, to agencies.
- Make recommendations on GIS hardware & software plus evaluate & participate in pilot studies.
- Prepare proposed legislation and funding proposals for the Legislature to coordinate the implementation of GIS.
- Address data sensitivity issues.
- Provide an annual report on status and needs

Status

- OCC provides limited staff support (~0.2 FTE-2 persons) with earnings from Federal funds
- No State funding
- Submit an annual budget request through OCC's budget request
- State Geographic Information Revolving Fund
- Developed a Strategic & Business Plan-2007
 - <http://okmaps.onenet.net/documents/OGI%20Strategic%20Plan%20-%20Final%20Draft.pdf>

Activities

- Provided GIS support to several agencies-
- Disaster response- State Incident Management Team
 - 2013 Moore Tornado & Presidential Visit
 - 2013 El Reno/OKC Tornadoes
 - 2013 Ice Storm
 - 2013 Clayton Plane Crash
 - 2014 Guthrie Wild Fire
 - 2014 US Senior Open
 - Spring 2015-Tornadoes & Flooding
 - 2017-Hurricane Harvey-Rockport, TX
- State Broadband Initiative
- E911 Pilot Project
- Co-sponsored w/ *MAGIC* - NG911 GIS Workshop
- Coordinated development of State Address Standard

Activities

- State geospatial data clearinghouse-OKMaps
 - <https://okmaps.org/ogi/search.aspx>
 - OK Office of Homeland Security Funded-2008
 - No staff support-Contract programming, HDW, SW
 - Open Source technology based
 - FY'16 to FY'18 Performance Measures
 - 6,454 Unique Visitors/ Month – 310 %
 - 11,462 Visits/month – 225 %
 - Bandwith (downloads) 55 GB/Month – 205 %
 - LiDAR-Raw, DEM;Aerial Photos; Statewide Parcels

OKMaps
OKLAHOMA

Login

Search Explore Locate

Administrative Units
Education
Hydrology
Environment
Land Grids
Political
Transportation
Image Data
Weather
Historical Aerial Photos
Land Parcels
Structures
LIDAR Elevation Data
Seismicity

Measure: 0.00 mi
Mouseover On

☒ Google Maps Road Layer
☐ Google Maps Aerial Layer

☒ Oklahoma Counties

Map data ©2018 Google, INEGI Terms of Use Report a map error

GeoRSS
CSW 2.0.1
WMS 1.3.0
WFS 1.1.0
WCS 1.0

<https://okmaps.org/ogi/search.aspx>

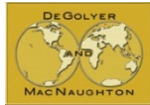
Explore, Download, Connect

Who is Downloading from OKMaps



Environmental Solutions & Innovations, Inc.

Real Science Real Solutions



Jayhawk Pipeline, LLC



WOLF RESOURCES



Federal Energy Regulatory Commission